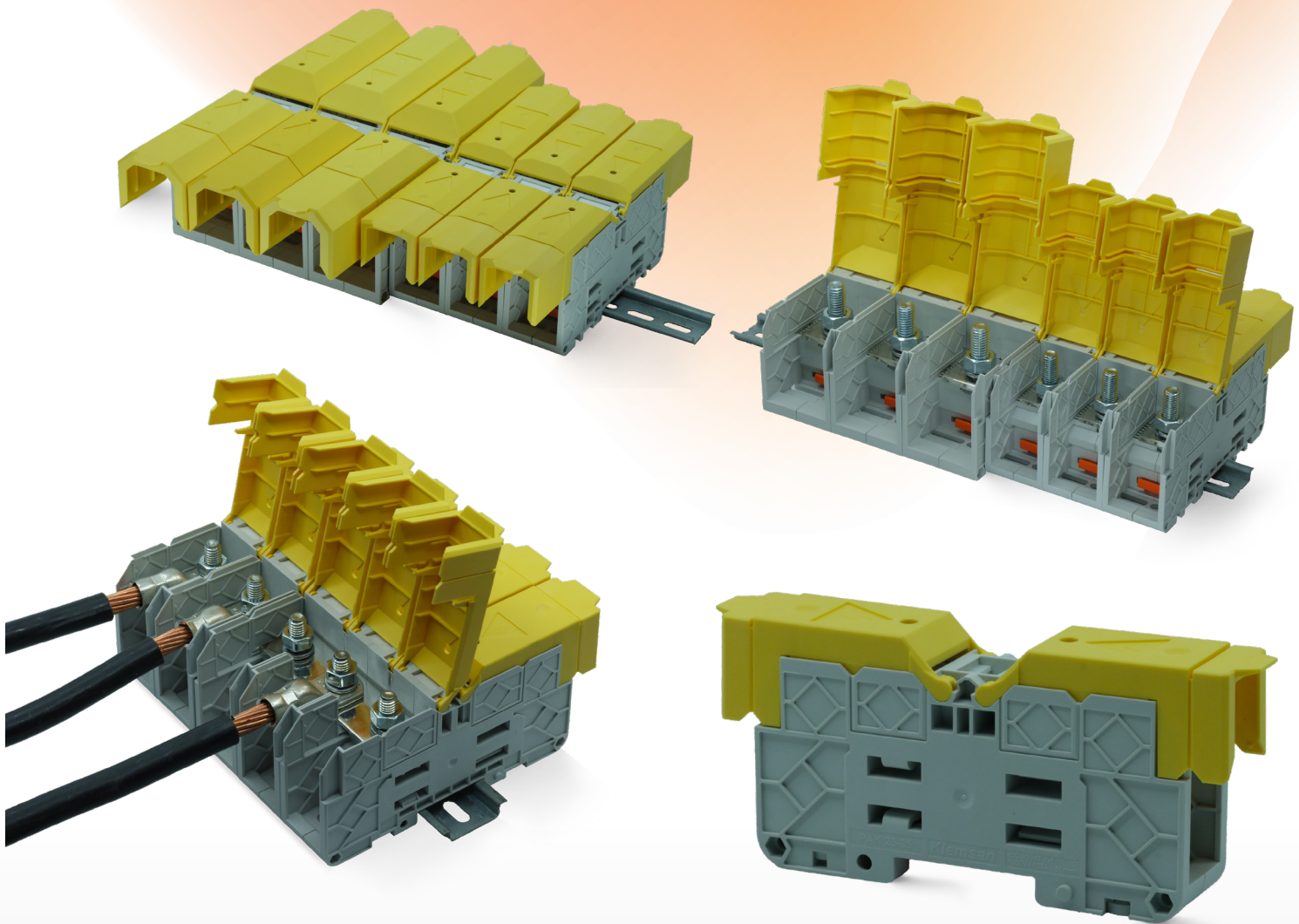
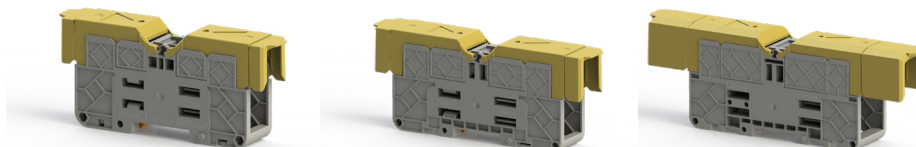


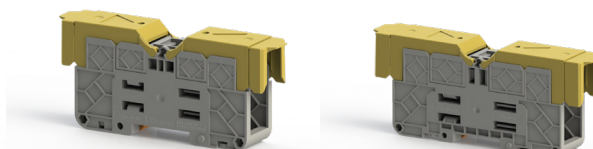
PAK Series



- High current carrying capacity and secure connection
- Fulfill Railway EN45545-2 Standard
- HL1 - HL2 - HL3 R22 - R23 - R24 - R26 Safety classes
- Cable connection in the cross section range of 25 - 300 mm²
- Fully insulated with insulation cover and body structure
- Suitable for cable lugs of different standards
- UL94 compliant, V0 flammability class



| Ordering Information | PAK 25-35 KK | | | PAK 50-70 KK | | | PAK 95-150 KK | | |
|----------------------------------|----------------------------------|-------|--------------------|----------------------------------|-------|--------------------|----------------------------------|-------|---------------------|
| Grey | 313019 | | | 313059 | | | 313099 | | |
| Electrical Ratings | | | | | | | | | |
| CE (EN 60947-7-1) | 1000 V | 125 A | 35 mm ² | 1000 V | 192 A | 70 mm ² | 1000 V | 309 A | 150 mm ² |
| Connection Data | V | A | Cross Section | V | A | Cross Section | V | A | Cross Section |
| Connection in acc. with standard | DIN 46234 - DIN46235 | | | DIN 46234 - DIN46235 | | | DIN 46234 - DIN46235 | | |
| Cable lugs DIN 46234 | 2,5 - 50 mm ² | | | 2,5 - 95 mm ² | | | 6 - 150 mm ² | | |
| Cable lugs DIN 46235 | 6 - 25 mm ² | | | 6 - 70 mm ² | | | 16 - 150 mm ² | | |
| Hole diameter | Ø 6,5 | | | Ø 8,4 | | | Ø 10,5 | | |
| Bolt | M 6 | | | M 8 | | | M 10 | | |
| Tightening torque, min - max | 3 Nm - 6 Nm | | | 6 Nm - 12 Nm | | | 10 Nm - 20 Nm | | |
| Dimensions | | | | | | | | | |
| Width | 27 mm | | | 31,8 mm | | | 41 mm | | |
| Length | 135 mm | | | 170 mm | | | 226 mm | | |
| Height MR 35x7,5 | 60 mm | | | 70 mm | | | 78,5 mm | | |
| Height MR 35x15 | 67,5 mm | | | 77,5 mm | | | 86 mm | | |
| Protection Cover | | | | | | | | | |
| Yellow - Cover | 466173 | | | 466183 | | | 466193 | | |
| Cross Connector | | | | | | | | | |
| 2 | 472002 | | | 472012 | | | 472022 | | |
| 3 | 472003 | | | 472013 | | | 472023 | | |
| Marking | | | | | | | | | |
| DG 10/6 | 505320 | | | 505320 | | | 505320 | | |
| D-NS 12x10 | 813450 | | | 813450 | | | 813450 | | |
| D-NS 14x10 | | | | | | | 813800 | | |
| SLF-P1 W | 1020100 | | | 1020100 | | | 1020100 | | |
| Screwdriver | | | | | | | | | |
| ISO 2725-1 / DIN 3124 | Socket wrench, wrench size 10 mm | | | Socket wrench, wrench size 13 mm | | | Socket wrench, wrench size 17 mm | | |



| Ordering Information | PAK 185-240 KK | | | PAK 300 KK | | |
|----------------------------------|----------------------------------|-------|---------------------|----------------------------------|-------|---------------------|
| Grey | 313139 | | | 313179 | | |
| Electrical Ratings | | | | | | |
| CE (EN 60947-7-1) | 1000 V | 415 A | 240 mm ² | 1000 V | 520 A | 300 mm ² |
| Connection Data | V | A | Cross Section | V | A | Cross Section |
| Connection in acc. with standard | DIN 46234 - DIN46235 | | | DIN 46234 - DIN46235 | | |
| Cable lugs DIN 46234 | 10 - 240 mm ² | | | 25 - 240 mm ² | | |
| Cable lugs DIN 46235 | 25 - 240 mm ² | | | 50 - 300 mm ² | | |
| Hole diameter | Ø 13 | | | Ø 17 | | |
| Bolt | M 12 | | | M 16 | | |
| Tightening torque, min - max | 14 Nm - 30 Nm | | | 25 Nm - 35 Nm | | |
| Dimensions | | | | | | |
| Width | 55 mm | | | 55 mm | | |
| Length | 280 mm | | | 280 mm | | |
| Height MR 35x7,5 | 90,3 mm | | | 90,3 mm | | |
| Height MR 35x15 | 97,8 mm | | | 97,8 mm | | |
| Protection Cover | | | | | | |
| Yellow - Cover | 466203 | | | 466203 | | |
| Cross Connector | | | | | | |
| 2 | 472032 | | | 472042 | | |
| 3 | 472033 | | | 472043 | | |
| Marking | | | | | | |
| DG 10/6 | 505320 | | | 505320 | | |
| D-NS 12x10 | 813450 | | | 813450 | | |
| D-NS 14x10 | 813800 | | | 813800 | | |
| SLF-P1 W | 1020100 | | | 1020100 | | |
| Screwdriver | | | | | | |
| ISO 2725-1 / DIN 3124 | Socket wrench, wrench size 19 mm | | | Socket wrench, wrench size 24 mm | | |